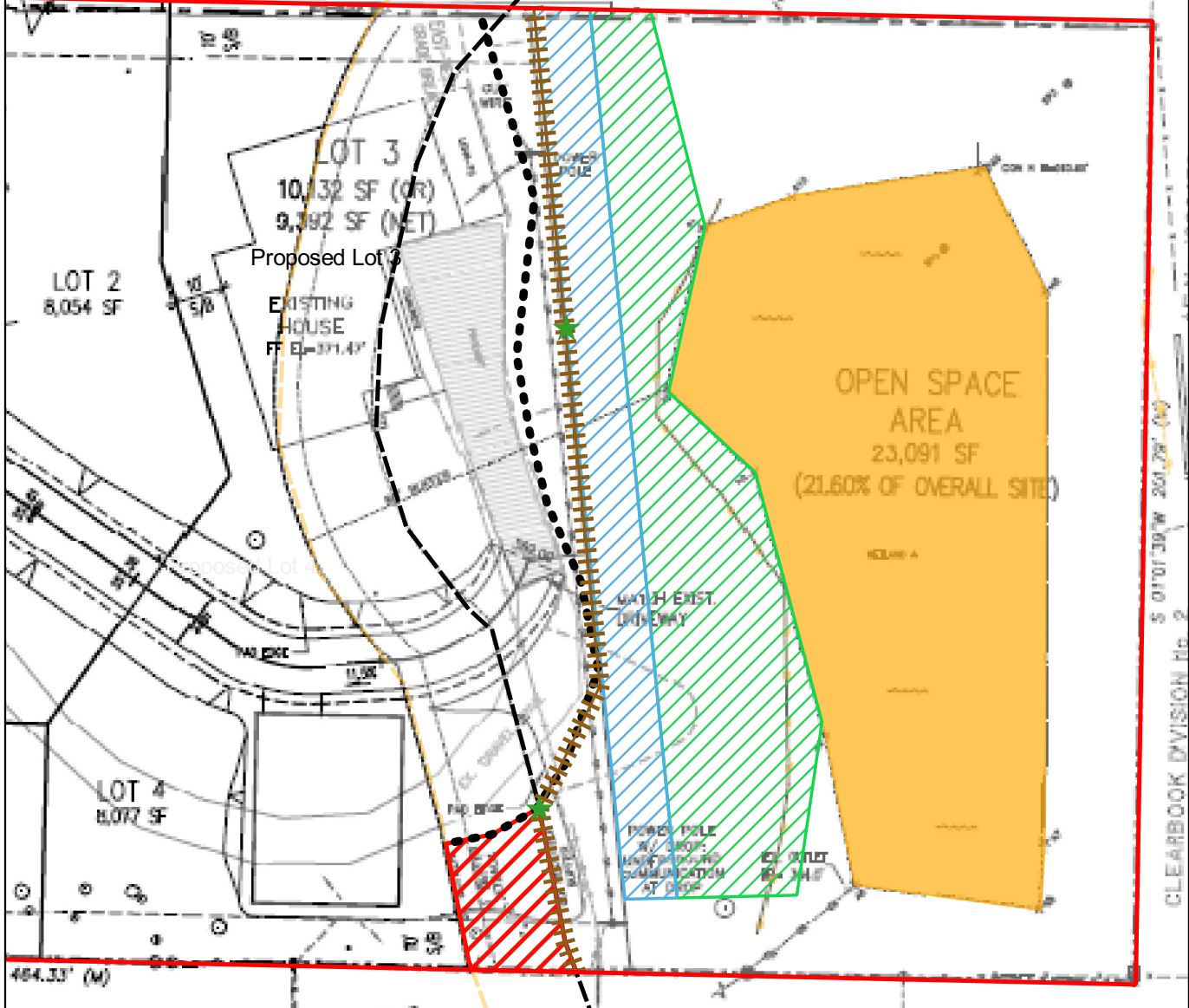




Note: Features shown were georeferenced from a professionally surveyed map. Size and location of features shown are approximate.

Map Prepared by:
 Northwest Ecological Services, LLC
 2801 Meridian St., Ste. 202, Bellingham, WA 98225
 360-734-9484 www.nwecological.com



| | |
|---------------------------|------------------------------------|
| Subject Parcel | Buffer Impact (600 sq. ft.) |
| Wetland A | Zone 1 Enhancement (2,000 sq. ft.) |
| 80ft Wetland Buffer | Zone 2 Enhancement (3,900 sq. ft.) |
| 60ft Reduced Buffer | Split Rail Fence |
| Edge of Functional Buffer | NGPA Sign |

| | | |
|---|---|--|
|  | <p>Buffer Impact and Mitigation Map</p> <p>1204 Yew Street (Parcel #380333038441) Critical Areas Assessment & Mitigation Plan</p> | <p>Figure 7</p> <p>DEC 2022</p> |
|---|---|--|